

R.F. MOTE

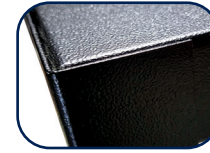
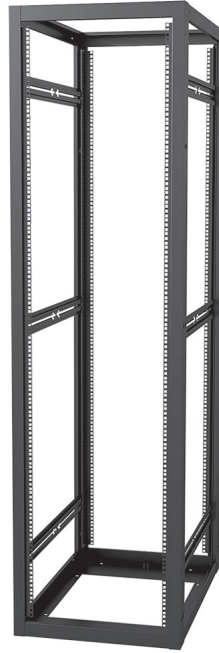
A division of Chatsworth Products

Your Technology Platform, Protected

The RFPR Four-Post Rack with 19" EIA Universal square-punched equipment mounting holes supports rack-mount server and data storage equipment in data centers or computer equipment closets.

KEY FEATURES

- Stability and strength of a welded steel enclosure in an open four-post frame
- Open design for unrestricted airflow and easy access to equipment and cabling
- Mounting rails adjust in depth to provide front and rear support for equipment
- Maximizes floor space with a minimal rack footprint
- Includes three grounding locations for easy attachment to the Telecommunications Grounding Busbar
- Square-punched equipment mounting holes
- Rack-mount units are marked and numbered on the mounting rails
- Easy to bay together to create multi-rack configurations
- Use with any RF Mote or CPI Cable Management systems to manage cables
- Support large equipment on heavy-duty shelves
- UL 2416 Listed



Welded Steel Frame



Adjustable Mounting Rails



Cable Management

SPECIFICATIONS

Description	<ul style="list-style-type: none"> • Four-post frame with square-punched mounting holes used to support 19" wide rack-mount network, computer server and data storage equipment and shelves • For indoor use only, in environmentally controlled areas; may not be used outdoors, in industrial or harsh environments, or in plenum spaces
Frame Includes	<ul style="list-style-type: none"> • (1) Welded equipment frame • (4) Punched, adjustable equipment mounting rails • (3) Grounding locations • (4) Adjustable leveling feet • (24) 1/4-20 cage nuts and screws • 3000 lb (1360 kg) of equipment, evenly distributed
Equipment Support	<ul style="list-style-type: none"> • Front and rear pairs of L-shaped equipment mounting angles • Rail to Rail Adjustable depth up to 34-1/2" • 19"W EIA-310-D compliant hole pattern • Universal hole pattern, 5/8"-5/8"-1/2" (15.9 mm - 15.9 mm -12.7 mm) vertical hole spacing • RFPR has square-punched .375" (9.53 mm) equipment mounting holes • Rack-mounted units are marked and numbered on the mounting edges
Load Capacity	3000 lb (1360 kg) of equipment, evenly distributed
Grounding/Bonding	(3) ground connections (pair of 1/4-20 studs on 5/8 centers) are located at the front and rear of the rack top on and rear of the rack base.
Finish	Epoxy-polyester hybrid textured powder coat paint • Colour is black
Material	• Steel: - Welded frame - Ships assembled
Certifications	• 19"W, EIA-310 Compliant • UL 2416 Listed

Availability: Canada

R.F. Mote, Richmond Hill,
Ontario, Canada
1-905-884-5250
info@rfmote.com

rfmote.com



The RFPR Four Post-Rack provides a sturdy, cost-effective solution for supporting rack-mount network, computer server and data storage equipment in data centers, computer equipment rooms and other IT facilities. The RFPR offers the strength and stability of an enclosure in an open four-post frame that provides easy access to equipment and cabling.

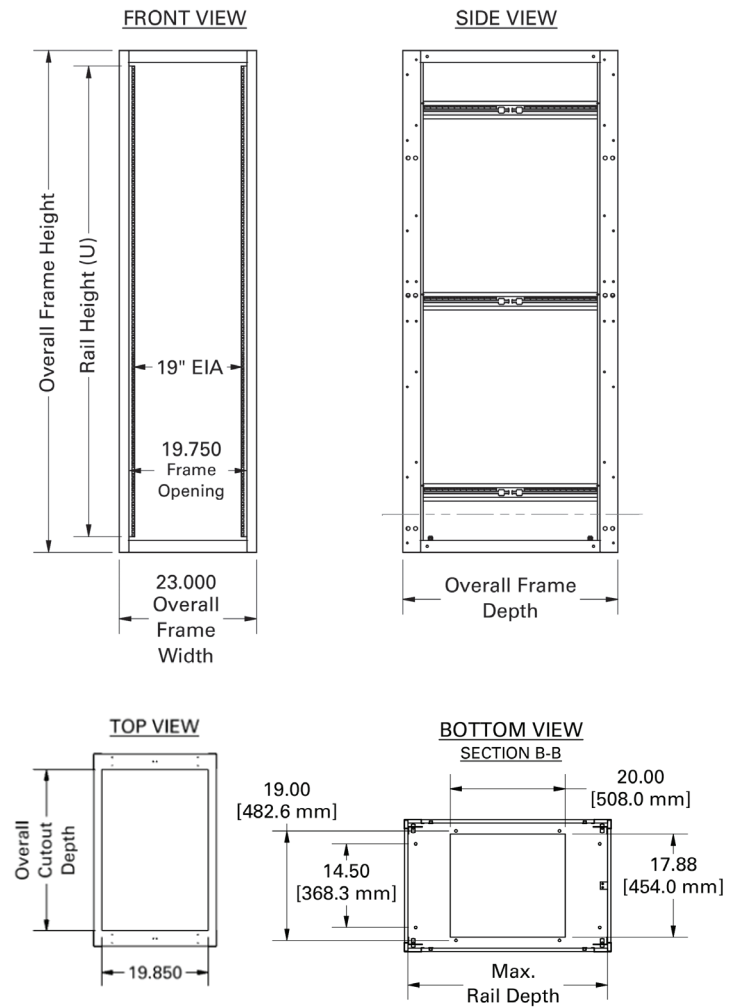
Each rack will support up to 3,000 lb (1360 kg) of equipment. The frames are fully welded to reduce assembly time and come with 4 equipment mounting angles that provide front and rear support for 19" wide rackmount equipment or shelves. The rack is available in two heights and three depth ranges.

The RFPR has square-punched holes that let you change mounting hardware (Clik-Nut Hardware Kit or standard cage nuts) to match specific computer server and data storage equipment mounting requirements. Each rack-mount unit is marked and numbered on the mounting angles making it easy to locate and position equipment.

The RFPR can be used in combination with either RF Mote Vertical Cable Managers or CPI Cabling Sections which bolt directly to the side of the rack corner post, and the base of the rack is punched for easy floor attachment.

Create a rack solution that fits your needs by selecting specific cable and power management accessories. Contact your local CPI Regional Sales Manager or R.F. Mote Technical Support at: info@rfmote.com or 1-905-884-5250, for complete product details.

DIMENSIONAL DRAWINGS



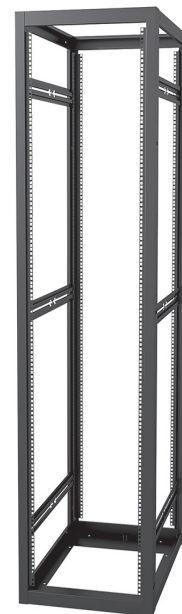
ORDERING INFORMATION

RFPR Four-Post Rack

Frame includes:

- (4) Mounting Rails
- Hardware Kit
- Colour is Black

Part Number	Width	Height	U	Depth	Max. Rail Depth	Cutout Depth
RFM-RFPR-232445-B	23.00"	84.00"	45U	24.00"	22.7"	18.00"
RFM-RFPR-233045-B	23.00"	84.00"	45U	30.00"	28.7"	24.00"
RFM-RFPR-233645-B	23.00"	84.00"	45U	36.00"	34.7"	30.00"
RFM-RFPR-232448-B	23.00"	90.00"	48U	24.00"	22.7"	18.00"
RFM-RFPR-233048-B	23.00"	90.00"	48U	30.00"	28.7"	24.00"
RFM-RFPR-233648-B	23.00"	90.00"	48U	36.00"	34.7"	30.00"



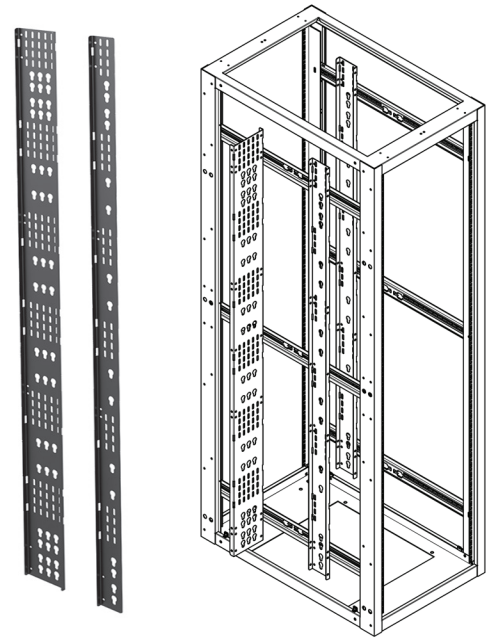
ACCESSORIES

Combination PDU and Cable Lashing Brackets

The RFPR features unique "Combination" PDU / Cable Lashing Brackets that can be installed either inside or outside of the RFPR Four-Post Frame. Placing them outside of the frame, typically for PDU mounting purposes, increases available space within the rack for both equipment and related cable management. Brackets can be installed flat or at 90 degrees and are available in both Single and Double Wide sizes. Tool-less PDU attachment points are located 1645 mm and 1556 mm (64.75" and 61.25") apart. The brackets support either one or two 56 mm (2.2"W) or narrower PDUs. The Double Wide Bracket is 140 mm (5.5") wide and the Single Wide Bracket is 76 mm (3.0") wide.

- Sold each
- Finish: Black

Part Number	Description
RFM2-PCM-S-B	PDU CableManager, Single-Wide (3.0"), Black
RFM2-PCM-D-B	PDU CableManager, Double-Wide (5.5"), Black



Vertical Finger Style Heavy Duty Cable Management Options

Manage your network cabling neatly, regardless of cable volumes. These vertical managers are available in Single Sided (SS) versions. To create a Double Sided version simply add the corresponding Rear Finger Kit. Alternatively, you can add the Cable Ring Kit (includes 6 rings) to the rear of the Single Sided managers. The vertical cable managers come in three widths and feature horizontal fingers located at each rack mount unit.

Part Number	U	Width	Single Sided Manager
RFM-RHDV-45-6-SB	45U	6.00"	High Density Vertical Finger Manager, Single-Sided, Black
RFM-RHDV-45-8-SB	45U	8.00"	
RFM-RHDV-45-10-SB	45U	10.00"	
RFM-RHDV-45-12-SB	45U	12.00"	
RFM-RHDV-48-6-SB	48U	6.00"	
RFM-RHDV-48-8-SB	48U	8.00"	
RFM-RHDV-48-10-SB	48U	10.00"	
RFM-RHDV-48-12SB	48U	12.00"	

Part Number	U	Width	Rear Vertical Mgr Kit*
RFM-HDRFK-45-6-SB	45U	6.00"	High Density, Double-Sided Vertical Cable Mgr (*Rear Vertical Finger Manager Kit requires combination with Single-Sided Vertical Cable Mgr to create Double-Sided), Black
RFM-HDRFK-45-8-SB	45U	8.00"	
RFM-HDRFK-45-10-SB	45U	10.00"	
RFM-HDRFK-45-12-SB	45U	12.00"	
RFM-HDRFK-48-6-SB	48U	6.00"	
RFM-HDRFK-48-8-SB	48U	8.00"	
RFM-HDRFK-48-10-SB	48U	10.00"	
RFM-HDRFK-48-12SB	48U	12.00"	

Part Number	Ring Cable Mgr Kit**
RFM-HDCRK-6-12-B	Rear Cable Ring Manager Kit, set of 6, (**Ring Manager Kit requires combination with Single-Sided Vertical Cable Mgr to create Rear Ring Manager), Black



ACCESSORIES

Part Number	U	Description
RFM-RFPR-2445-4	45U	Side Panel for RFM-RFPR-232445-B
RFM-RFPR-3045-4	45U	Side Panel for RFM-RFPR-233045-B
RFM-RFPR-3645-4	45U	Side Panel for RFM-RFPR-233645-B
RFM-RFPR-2448-4	48U	Side Panel for RFM-RFPR-232448-B
RFM-RFPR-3048-4	48U	Side Panel for RFM-RFPR-233048-B
RFM-RFPR-3648-4	48U	Side Panel for RFM-RFPR-233648-B

Side Panels

Used to close off the ends of rows or on either side of a single rack installation, side panels provide protection of the IT equipment and related cabling and provide a professional “finished” look.

- Includes Ground Clips
- Sold each
- Finish: Black



Cage Nut Hardware Kits

Additional equipment mounting hardware. Use screws with the Adjustable Mounting Angles.

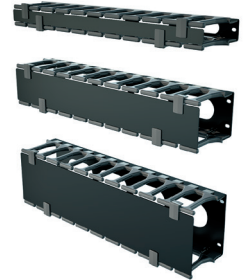


Part Number	Qty	Description
RFM-CN	24	1/4-20 Cage Nuts and 3/4" Screws
RFM-CN100	96	1/4-20 Cage Nuts and 3/4" Screws
RFM-CN10-32	24	#10-32 Cage Nuts and 1/2" Screws
RFM-CN10-32100	96	#10-32 Cage Nuts and 1/2" Screws

Horizontal Cable Management

Manage all of your network cabling neatly, regardless of cable volumes. These horizontal managers are available in 1U, 2U, and 3U spacing and feature removable door.

- Sold each
- Finish: Black



Part Number	Depth	Description
RFM2-191-HCM-F	4.380"	19"W, Horizontal with Removable Door, 1U
RFM2-192-HCM-F	4.380"	19"W, Horizontal with Removable Door, 2U
RFM2-193-HCM-F	4.380"	19"W, Horizontal with Removable Door, 3U

Grounding Bar

Grounding bars are an important component for ensuring proper electrical grounding.



Part Number	Fits	Description
RFM2-GB-UNI	45U & 48U	1"W x 3/16" thick, Vertical mount
RFM-HGB-19	19"EIA	1"W x 3/16" thick, Horizontal mount

Adjustable Mounting Depth - Fixed Position Shelves

Part Number	U	Shelf Depth	Overall Adjustable Mounting Depth	Load Capacity
RFM-1726-CFS-4	1U	26.00"	6.00" ~ 33.475"	200 lbs
RFM-1719-CFS-4	1U	19.00"	6.00" ~ 26.625"	200 lbs
RFM-2440-CFS-4	1U		23.75" ~ 45.50"	400 lbs

Adjustable Mounting Depth - Retractable Shelves

Part Number	U	Shelf Depth	Overall Adjustable Mounting Depth	Load Capacity
RFM-1726-CRS-4-1U	1U	26.00"	13.00" ~ 33.35"	100 lbs

Mounting Shelf, Four-Post

Support heavy peripheral equipment with adjustable mounting depth, fixed position or retractable shelves.

- Sold Each
- Finish: Black



rfmote.com

info@rfmote.com

1-905-884-5250

R.F. MOTE
A division of Chatsworth Products

While every effort has been made to ensure the accuracy of all information, CPI does not accept liability for any errors or omissions and reserves the right to change information and descriptions of listed services and products.

©2025 Chatsworth Products, Inc. All rights reserved.
Rev.2 04/25 MKT-CPI-811.en-CA